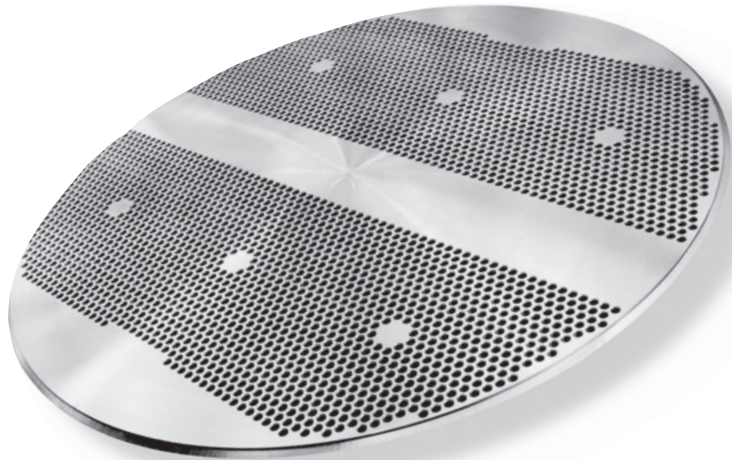




Get Up to Speed!

Increase Your Drilling Speed and Feed Rates Up to 30% for **Carbide** Drilling with Sandmeyer E-Z Drill Stainless Steel Plate



Sandmeyer Steel Company produces a free-machining version of types 304, 304H, 304L, 316 and 316L Stainless Steel Plate.

Sandmeyer Steel achieves improved machinability through a special ladle metallurgy of molten steel, enriched with a calcium treatment that controls the size, composition and distribution of oxide inclusions. These inclusions are key to the process — acting as lubricants that make it possible for you to significantly increase feed rates.

And E-Z Drill gives you the same yield, tensile, elongation, hardness, toughness and corrosion resistance you get from standard austenitic stainless steels.

Thicknesses & Grades

E-Z Drill is stocked in thicknesses of 3/16" (4.8 mm) to 6" (152.4 mm) and in types 304, 304H, 304L, 316 and 316L.

Materials Certifications

E-Z Drill can be certified to ASTM, ASME and QQS-766 specifications.

Increased Performance

If you're using **carbide** drilling tools for drilling, reaming or

grooving holes, E-Z Drill makes it possible to increase feed rates by as much as 30% without increasing drill wear.

Visit our website at www.SandmeyerSteel.com for a complete review of the Value Added Plate Processing we can do for you, as well as the most up-to-date Stainless Steel Plate and Nickel Alloy Plate stock lists.

Carbide Drilling E-Z Drill Test Results		
HOLE DIAMETER	NORMAL RATE	E-Z DRILL RATE
1/2"	2123 RPM - 16.9 IPM	3032 RPM - 24.2 IPM
3/4"	1400 RPM - 11.2 IPM	2000 RPM - 16.0 IPM
1"	1061 RPM - 8.5 IPM	1516 RPM - 12.1 IPM
1-1/4"	850 RPM - 6.8 IPM	1213 RPM - 9.7 IPM
1-1/2"	708 RPM - 5.6 IPM	1011 RPM - 8.0 IPM

Our drilling operations were completed on 304 straight grade and 304 E-Z Drill material using 3/4" diameter **carbide** insert drills. The optimum performance came at 393 SFM. Drill inserts used in testing were manufactured by a leading producer of **carbide** inserts.



SANDMEYER STEEL COMPANY
 ONE SANDMEYER LANE • PHILADELPHIA, PA 19116-3598
 800-523-3663 • +1-215-464-7100 • FAX +1-215-677-1430
www.SandmeyerSteel.com

Providing Solutions, With Materials and Value-Added Products, for Process Industries